

Beloukha™

A plant-derived, broad-spectrum, non-selective herbicide

ACTIVE INGREDIENT

Pelargonic Acid

% ACTIVE INGREDIENT

51.98%

FORMULATION

Liquid concentrate

CHEMICAL FAMILY

Fatty acid

BRAND ALTERNATIVE

Scythe®

RESTRICTED USE

No

SIGNAL WORD

Warning

PACKAGING

4 x 1 gal, 2 x 2.5 gal

LABELED USES

Turfgrass

Landscape areas

Hardscapes and ornamentals



Beloukha™ is a sunflower-based, foliar-applied, contact herbicide, providing non-selective burndown of both annual and perennial broadleaf and grassy weeds, as well as most mosses and other cryptogams. Beloukha is fast acting with visible effects within 2 hours of application. It's also proven to be rainfast within 2 hours of applying. Beloukha is effective on most weeds in various weather conditions, working faster when used in, sunny, hot, dry weather with an ideal concentration rate between 5 and 8% (6.5 - 10.5 ounces of Beloukha per 1 gallon of water).

PRODUCT BENEFITS

- PROVIDES BURNDOWN of both annual and perennial broadleaf and grass weeds, as well as most mosses and other cryptogams.
- FAST ACTING – visible effects on most weeds occur within hours.
- LOW ODOR – improved formulation vs animal-based products
- BIODEGRADABLE – Soil organisms degradation produces CO₂ and H₂O that remains in the carbon cycle
- VERSATILE – use on turf, landscape, hardscape and ornamental areas.

Beloukha™

A plant-derived, broad-spectrum, non-selective herbicide



Before Beloukha



After Beloukha



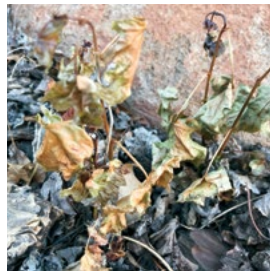
Before Beloukha



After Beloukha



Before Beloukha



After Beloukha



Before Beloukha



After Beloukha



Before Beloukha



After Beloukha



Before Beloukha



After Beloukha



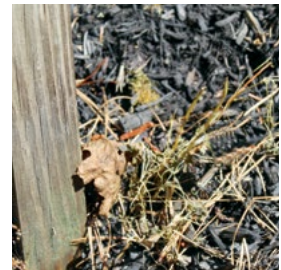
Before Beloukha



After Beloukha



Before Beloukha



After Beloukha

Read label for full application and rate information.

Prime Source, a Division of Albaugh, LLC • 1525 NE 36th Street, Ankeny, IA 50021 • www.primesource-albaugh.com

©2021 Albaugh, LLC. Prime Source is a trademark of Albaugh, LLC. Beloukha is a trademark of Belchim Crop Protection. Always read and follow label Precautions and Directions For Use.